

# NSW Abalone Fishery Logbook catch figures

Abalone Council of NSW

10 September, 2015

Annual Zone summary from July 1982

Note catch data from 1982 only half a year and up to end August 2015

Contents

Figure description

Region 1-2

- Zone B, Sandon
- Zone E, Foster
- Zone H, Broken Bay
- Zone L, Shoalhaven
- Zone M, Wreck Bay
- Zone N, Ulladulla
- Zone P, Sth Brush
- Zone Q, Batemans
- Zone R, Moruya

Region 3-4

- Zone S, Tuross
- Zone T, Narooma
- Zone U, Bermagui
- Zone V, Mimosa Rocks
- Zone W, Tathra
- Zone X, Merimbula

Region 5-6

- Zone Y1, Eden
- Zone Y2, Mowarra
- Zone Y3, Greencape
- Zone Z, Wonboyn

# Contents

## Figure description

### Region 1-2

- Zone B, Sandon
- Zone E, Foster
- Zone H, Broken Bay
- Zone L, Shoalhaven
- Zone M, Wreck Bay
- Zone N, Ulladulla
- Zone P, Sth Brush
- Zone Q, Batemans
- Zone R, Moruya

### Region 3-4

- Zone S, Tuross
- Zone T, Narooma
- Zone U, Bermagui
- Zone V, Mimosa Rocks
- Zone W, Tathra
- Zone X, Merimbula

### Region 5-6

- Zone Y1, Eden
- Zone Y2, Mowarry
- Zone Y3, Greencape
- Zone Z, Wonboyn

## Contents

### Figure description

#### Region 1-2

- Zone B, Sandon
- Zone E, Foster
- Zone H, Broken Bay
- Zone L, Shoalhaven
- Zone M, Wreck Bay
- Zone N, Ulladulla
- Zone P, Sth Brush
- Zone Q, Batemans
- Zone R, Moruya

#### Region 3-4

- Zone S, Tuross
- Zone T, Narooma
- Zone U, Bermagui
- Zone V, Mimosa Rocks
- Zone W, Tathra
- Zone X, Merimbula

#### Region 5-6

- Zone Y1, Eden
- Zone Y2, Mowarry
- Zone Y3, Greencape
- Zone Z, Wonboyn

# Figure description

Graph 1. Total catch (blue bars and text) with total catch/effort (red).

Graph 2. Total catch/effort (red) and geometric mean catch rate per bin (pink).

Graph 3. Mean weight of abalone (magenta) available since 1999.

Graph 4. Number of abalone in catch (orange) available since 1999.

Graph 5. Total catch as a percent of total fishery catch (green).

## Contents

### Figure description

#### Region 1-2

- Zone B, Sandon
- Zone E, Foster
- Zone H, Broken Bay
- Zone L, Shoalhaven
- Zone M, Wreck Bay
- Zone N, Ulladulla
- Zone P, Sth Brush
- Zone Q, Batemans
- Zone R, Moruya

#### Region 3-4

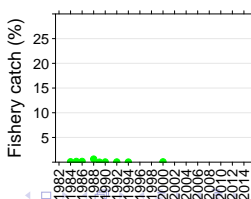
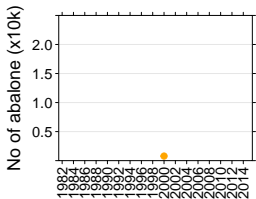
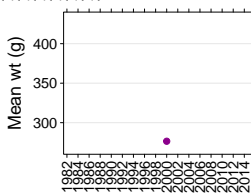
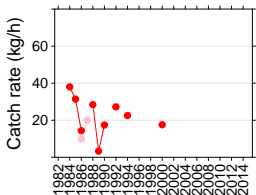
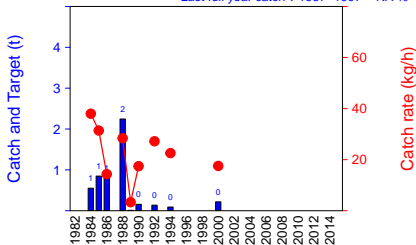
- Zone S, Tuross
- Zone T, Narooma
- Zone U, Bermagui
- Zone V, Mimosa Rocks
- Zone W, Tathra
- Zone X, Merimbula

#### Region 5-6

- Zone Y1, Eden
- Zone Y2, Mowarra
- Zone Y3, Greencape
- Zone Z, Wonboyn

# Zone B, Sandon

Last full 3 year catch v 1987-1997 = NaN %  
 Last full year catch v 1987-1997 = NA %



## Contents

### Figure description

#### Region 1-2

- Zone B, Sandon
- Zone E, Foster
- Zone H, Broken Bay
- Zone L, Shoalhaven
- Zone M, Wreck Bay
- Zone N, Ulladulla
- Zone P, Sth Brush
- Zone Q, Batemans
- Zone R, Moruya

#### Region 3-4

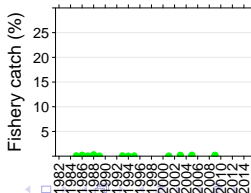
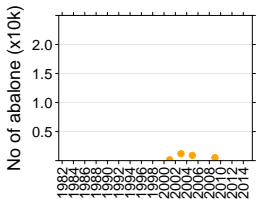
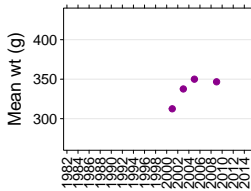
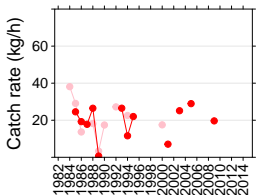
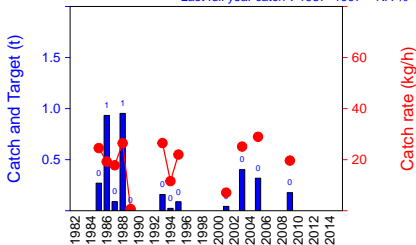
- Zone S, Tuross
- Zone T, Narooma
- Zone U, Bermagui
- Zone V, Mimosa Rocks
- Zone W, Tathra
- Zone X, Merimbula

#### Region 5-6

- Zone Y1, Eden
- Zone Y2, Mowarra
- Zone Y3, Greencape
- Zone Z, Wonboyn

# Zone C, Coffs

Last full 3 year catch v 1987-1997 = NaN %  
 Last full year catch v 1987-1997 = NA %



## Contents

### Figure description

#### Region 1-2

- Zone B, Sandon
- Zone E, Foster
- Zone H, Broken Bay
- Zone L, Shoalhaven
- Zone M, Wreck Bay
- Zone N, Ulladulla
- Zone P, Sth Brush
- Zone Q, Batemans
- Zone R, Moruya

#### Region 3-4

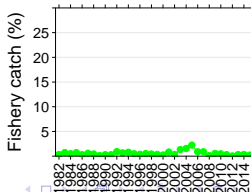
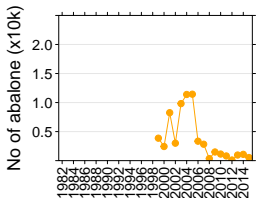
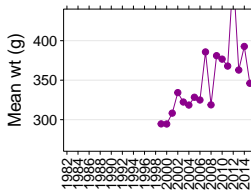
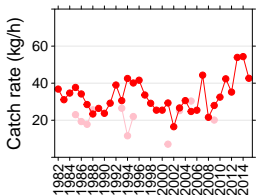
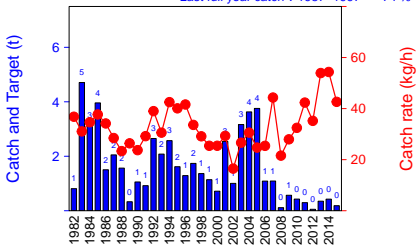
- Zone S, Turoos
- Zone T, Narooma
- Zone U, Bermagui
- Zone V, Mimosa Rocks
- Zone W, Tathra
- Zone X, Merimbula

#### Region 5-6

- Zone Y1, Eden
- Zone Y2, Mowarra
- Zone Y3, Greencape
- Zone Z, Wonboyn

# Zone D, Port Macquarie

Last full 3 year catch v 1987-1997 = -83 %  
 Last full year catch v 1987-1997 = -74 %



## Contents

### Figure description

#### Region 1-2

- Zone B, Sandon
- Zone E, Foster
- Zone H, Broken Bay
- Zone L, Shoalhaven
- Zone M, Wreck Bay
- Zone N, Ulladulla
- Zone P, Sth Brush
- Zone Q, Batemans
- Zone R, Moruya

#### Region 3-4

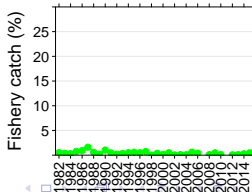
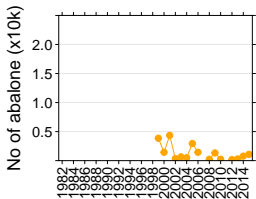
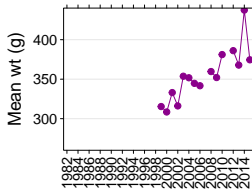
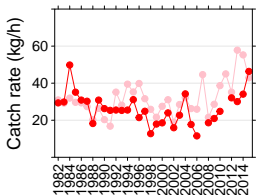
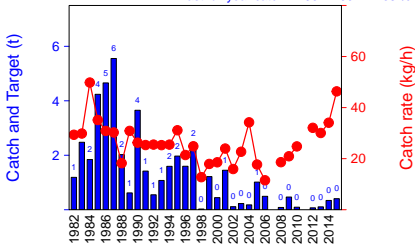
- Zone S, Tuross
- Zone T, Narooma
- Zone U, Bermagui
- Zone V, Mimosa Rocks
- Zone W, Tathra
- Zone X, Merimbula

#### Region 5-6

- Zone Y1, Eden
- Zone Y2, Mowarra
- Zone Y3, Greencape
- Zone Z, Wonboyn

# Zone E, Foster

Last full 3 year catch v 1987-1997 = -91 %  
 Last full year catch v 1987-1997 = -83 %



## Contents

### Figure description

#### Region 1-2

- Zone B, Sandon
- Zone E, Foster**
- Zone H, Broken Bay
- Zone L, Shoalhaven
- Zone M, Wreck Bay
- Zone N, Ulladulla
- Zone P, Sth Brush
- Zone Q, Batemans
- Zone R, Moruya

#### Region 3-4

- Zone S, Tuross
- Zone T, Narooma
- Zone U, Bermagui
- Zone V, Mimosa Rocks
- Zone W, Tathra
- Zone X, Merimbula

#### Region 5-6

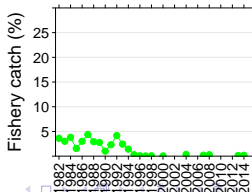
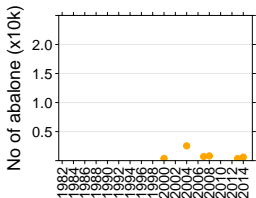
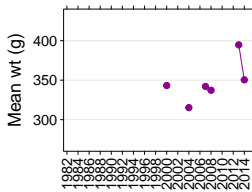
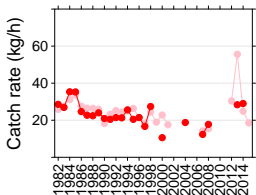
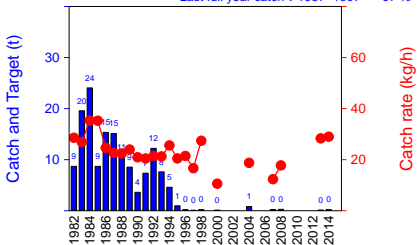
- Zone Y1, Eden
- Zone Y2, Mowarra
- Zone Y3, Greencape
- Zone Z, Wonboyn





# Zone G, Swansea

Last full 3 year catch v 1987-1997 = -97 %  
 Last full year catch v 1987-1997 = -97 %



## Contents

### Figure description

#### Region 1-2

- Zone B, Sandon
- Zone E, Foster
- Zone H, Broken Bay
- Zone L, Shoalhaven
- Zone M, Wreck Bay
- Zone N, Ulladulla
- Zone P, Sth Brush
- Zone Q, Batemans
- Zone R, Moruya

#### Region 3-4

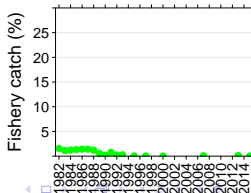
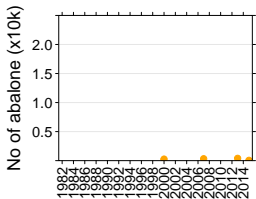
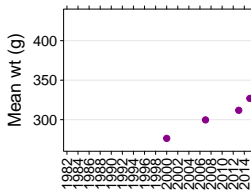
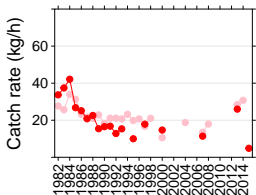
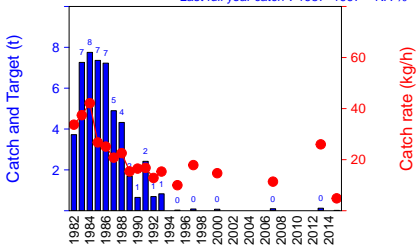
- Zone S, Tuross
- Zone T, Narooma
- Zone U, Bermagui
- Zone V, Mimosa Rocks
- Zone W, Tathra
- Zone X, Merimbula

#### Region 5-6

- Zone Y1, Eden
- Zone Y2, Mowarra
- Zone Y3, Greencape
- Zone Z, Wonboyn

# Zone H, Broken Bay

Last full 3 year catch v 1987-1997 = -94 %  
 Last full year catch v 1987-1997 = NA %



## Contents

### Figure description

#### Region 1-2

- Zone B, Sandon
- Zone E, Foster
- Zone H, Broken Bay**
- Zone L, Shoalhaven
- Zone M, Wreck Bay
- Zone N, Ulladulla
- Zone P, Sth Brush
- Zone Q, Batemans
- Zone R, Moruya

#### Region 3-4

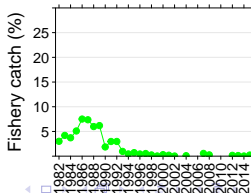
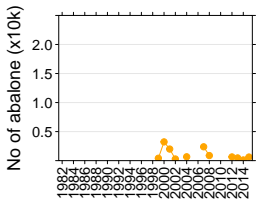
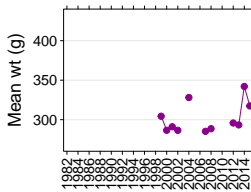
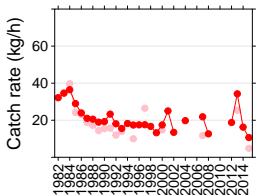
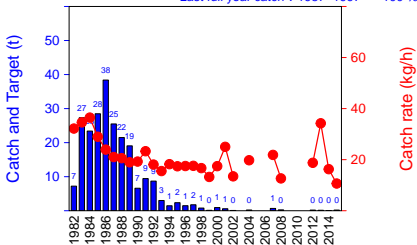
- Zone S, Tuross
- Zone T, Narooma
- Zone U, Bermagui
- Zone V, Mimosa Rocks
- Zone W, Tathra
- Zone X, Merimbula

#### Region 5-6

- Zone Y1, Eden
- Zone Y2, Mowarra
- Zone Y3, Greencape
- Zone Z, Wonboyn

# Zone J, Botany Bay

Last full 3 year catch v 1987-1997 = -99 %  
 Last full year catch v 1987-1997 = -100 %



## Contents

### Figure description

#### Region 1-2

- Zone B, Sandon
- Zone E, Foster
- Zone H, Broken Bay
- Zone L, Shoalhaven
- Zone M, Wreck Bay
- Zone N, Ulladulla
- Zone P, Sth Brush
- Zone Q, Batemans
- Zone R, Moruya

#### Region 3-4

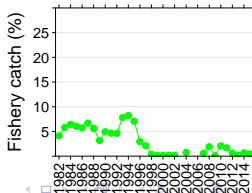
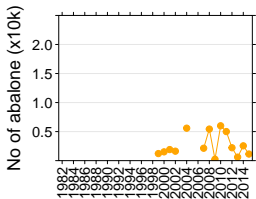
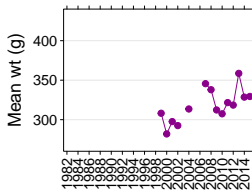
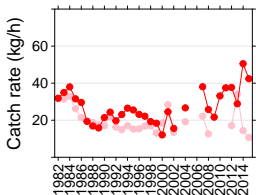
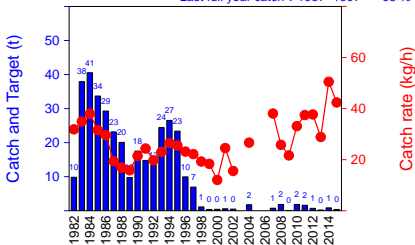
- Zone S, Tuross
- Zone T, Narooma
- Zone U, Bermagui
- Zone V, Mimosa Rocks
- Zone W, Tathra
- Zone X, Merimbula

#### Region 5-6

- Zone Y1, Eden
- Zone Y2, Mowarra
- Zone Y3, Greencape
- Zone Z, Wonboyn

# Zone K, Wollongong

Last full 3 year catch v 1987-1997 = -95 %  
 Last full year catch v 1987-1997 = -95 %



## Contents

### Figure description

#### Region 1-2

- Zone B, Sandon
- Zone E, Foster
- Zone H, Broken Bay
- Zone L, Shoalhaven
- Zone M, Wreck Bay
- Zone N, Ulladulla
- Zone P, Sth Brush
- Zone Q, Batemans
- Zone R, Moruya

#### Region 3-4

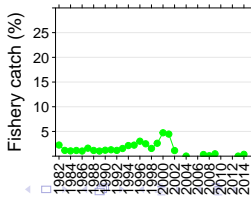
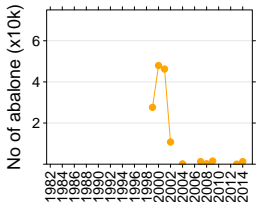
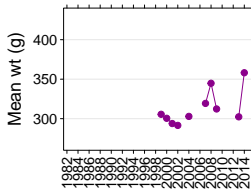
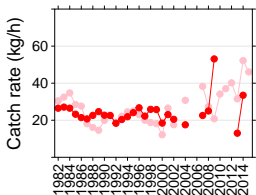
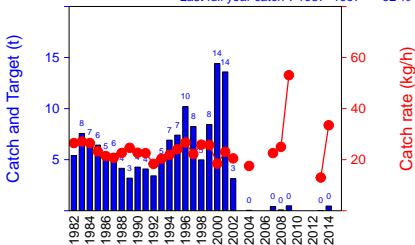
- Zone S, Tuross
- Zone T, Narooma
- Zone U, Bermagui
- Zone V, Mimosa Rocks
- Zone W, Tathra
- Zone X, Merimbula

#### Region 5-6

- Zone Y1, Eden
- Zone Y2, Mowarra
- Zone Y3, Greencape
- Zone Z, Wonboyn

# Zone L, Shoalhaven

Last full 3 year catch v 1987-1997 = -96 %  
 Last full year catch v 1987-1997 = -92 %



## Contents

### Figure description

#### Region 1-2

- Zone B, Sandon
- Zone E, Foster
- Zone H, Broken Bay
- Zone L, Shoalhaven**
- Zone M, Wreck Bay
- Zone N, Ulladulla
- Zone P, Sth Brush
- Zone Q, Batemans
- Zone R, Moruya

#### Region 3-4

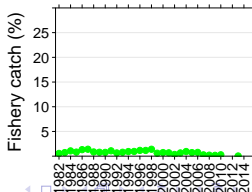
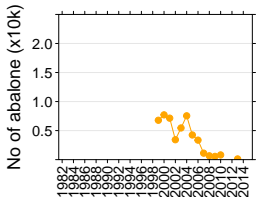
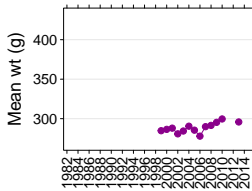
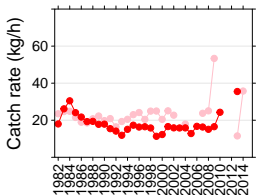
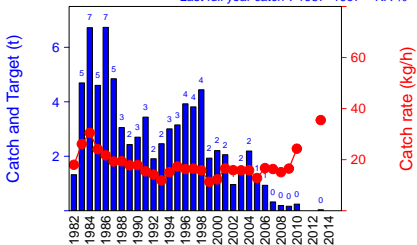
- Zone S, Tuross
- Zone T, Narooma
- Zone U, Bermagui
- Zone V, Mimosa Rocks
- Zone W, Tathra
- Zone X, Merimbula

#### Region 5-6

- Zone Y1, Eden
- Zone Y2, Mowarra
- Zone Y3, Greencape
- Zone Z, Wonboyn

# Zone M, Wreck Bay

Last full 3 year catch v 1987-1997 = -99 %  
 Last full year catch v 1987-1997 = NA %



## Contents

### Figure description

#### Region 1-2

- Zone B, Sandon
- Zone E, Foster
- Zone H, Broken Bay
- Zone L, Shoalhaven
- Zone M, Wreck Bay**
- Zone N, Ulladulla
- Zone P, Sth Brush
- Zone Q, Batemans
- Zone R, Moruya

#### Region 3-4

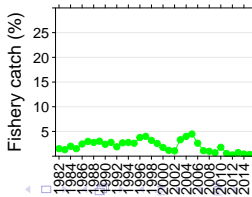
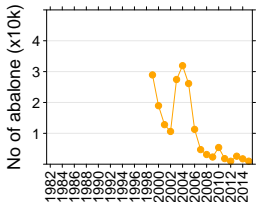
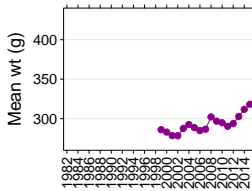
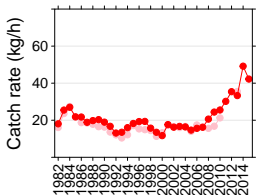
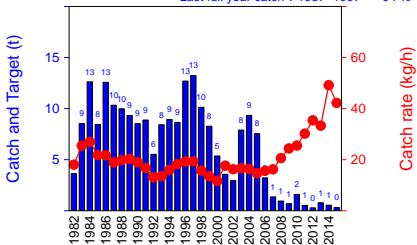
- Zone S, Tuross
- Zone T, Narooma
- Zone U, Bermagui
- Zone V, Mimosa Rocks
- Zone W, Tathra
- Zone X, Merimbula

#### Region 5-6

- Zone Y1, Eden
- Zone Y2, Mowarra
- Zone Y3, Greencape
- Zone Z, Wonboyn

# Zone N, Ulladulla

Last full 3 year catch v 1987-1997 = -94 %  
 Last full year catch v 1987-1997 = -94 %



## Contents

### Figure description

#### Region 1-2

- Zone B, Sandon
- Zone E, Foster
- Zone H, Broken Bay
- Zone L, Shoalhaven
- Zone M, Wreck Bay
- Zone N, Ulladulla**
- Zone P, Sth Brush
- Zone Q, Batemans
- Zone R, Moruya

#### Region 3-4

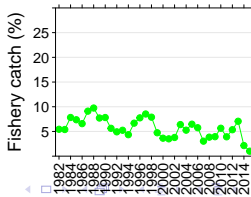
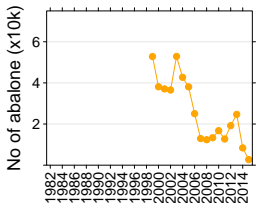
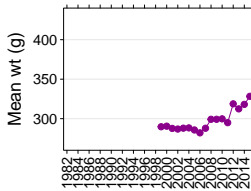
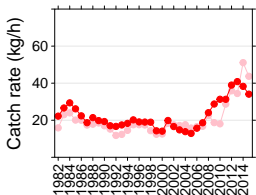
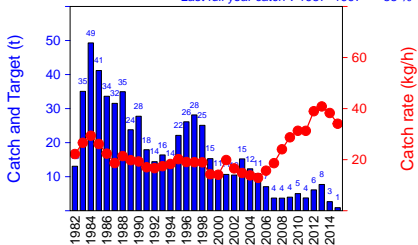
- Zone S, Tuross
- Zone T, Narooma
- Zone U, Bermagui
- Zone V, Mimosa Rocks
- Zone W, Tathra
- Zone X, Merimbula

#### Region 5-6

- Zone Y1, Eden
- Zone Y2, Mowarra
- Zone Y3, Greencape
- Zone Z, Wonboyn

# Zone P, Sth Brush

Last full 3 year catch v 1987-1997 = -78 %  
 Last full year catch v 1987-1997 = -88 %



## Contents

### Figure description

#### Region 1-2

- Zone B, Sandon
- Zone E, Foster
- Zone H, Broken Bay
- Zone L, Shoalhaven
- Zone M, Wreck Bay
- Zone N, Ulladulla
- Zone P, Sth Brush
- Zone Q, Batemans
- Zone R, Moruya

#### Region 3-4

- Zone S, Tuross
- Zone T, Narooma
- Zone U, Bermagui
- Zone V, Mimosa Rocks
- Zone W, Tathra
- Zone X, Merimbula

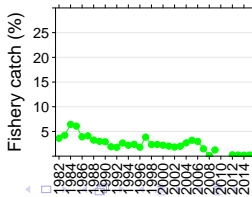
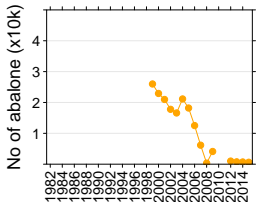
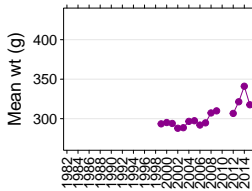
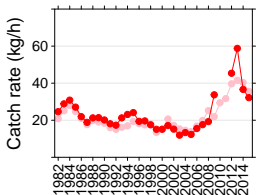
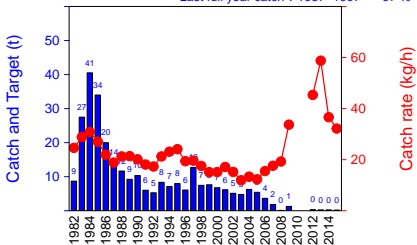
#### Region 5-6

- Zone Y1, Eden
- Zone Y2, Mowarra
- Zone Y3, Greencape
- Zone Z, Wonboyn



# Zone Q, Batemans

Last full 3 year catch v 1987-1997 = -97 %  
 Last full year catch v 1987-1997 = -97 %



## Contents

## Figure description

### Region 1-2

- Zone B, Sandon
- Zone E, Foster
- Zone H, Broken Bay
- Zone L, Shoalhaven
- Zone M, Wreck Bay
- Zone N, Ulladulla
- Zone P, Sth Brush
- Zone Q, Batemans**
- Zone R, Moruya

### Region 3-4

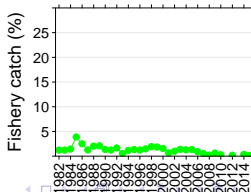
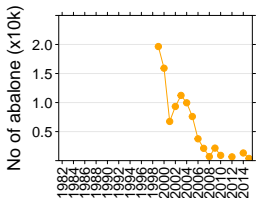
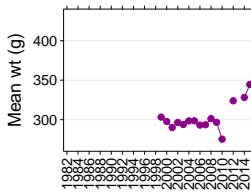
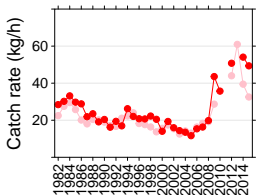
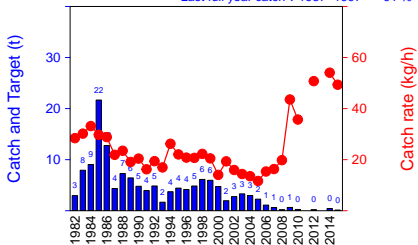
- Zone S, Tuross
- Zone T, Narooma
- Zone U, Bermagui
- Zone V, Mimosa Rocks
- Zone W, Tathra
- Zone X, Merimbula

### Region 5-6

- Zone Y1, Eden
- Zone Y2, Mowarra
- Zone Y3, Greencape
- Zone Z, Wonboyn

# Zone R, Moruya

Last full 3 year catch v 1987-1997 = -93 %  
 Last full year catch v 1987-1997 = -91 %



## Contents

### Figure description

#### Region 1-2

- Zone B, Sandon
- Zone E, Foster
- Zone H, Broken Bay
- Zone L, Shoalhaven
- Zone M, Wreck Bay
- Zone N, Ulladulla
- Zone P, Sth Brush
- Zone Q, Batemans
- Zone R, Moruya**

#### Region 3-4

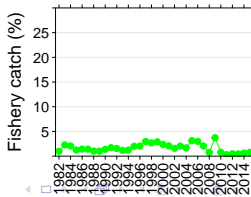
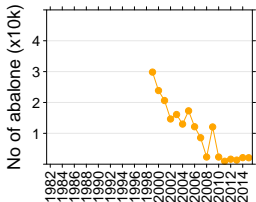
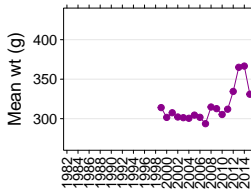
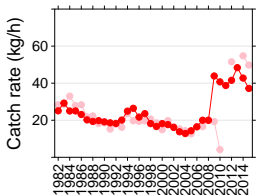
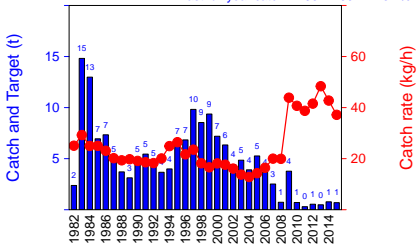
- Zone S, Tuross
- Zone T, Narooma
- Zone U, Bermagui
- Zone V, Mimosa Rocks
- Zone W, Tathra
- Zone X, Merimbula

#### Region 5-6

- Zone Y1, Eden
- Zone Y2, Mowarra
- Zone Y3, Greencape
- Zone Z, Wonboyn

# Zone S, Tuross

Last full 3 year catch v 1987-1997 = -89 %  
 Last full year catch v 1987-1997 = -84 %



## Contents

### Figure description

#### Region 1-2

- Zone B, Sandon
- Zone E, Foster
- Zone H, Broken Bay
- Zone L, Shoalhaven
- Zone M, Wreck Bay
- Zone N, Ulladulla
- Zone P, Sth Brush
- Zone Q, Batemans
- Zone R, Moruya

#### Region 3-4

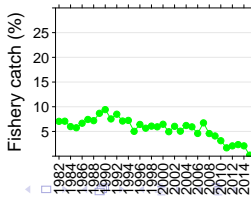
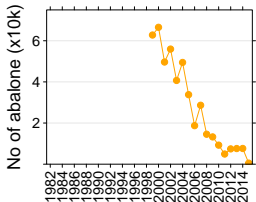
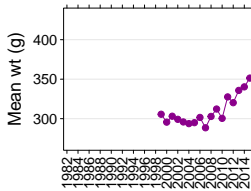
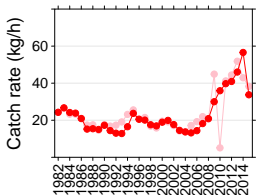
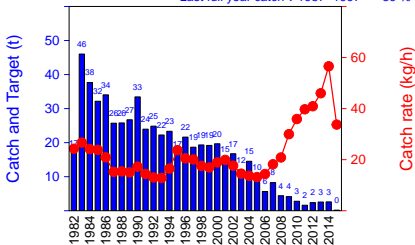
- Zone S, Tuross**
- Zone T, Narooma
- Zone U, Bermagui
- Zone V, Mimosa Rocks
- Zone W, Tathra
- Zone X, Merimbula

#### Region 5-6

- Zone Y1, Eden
- Zone Y2, Mowarra
- Zone Y3, Greencape
- Zone Z, Wonboyn

# Zone T, Narooma

Last full 3 year catch v 1987-1997 = -91 %  
 Last full year catch v 1987-1997 = -89 %



## Contents

### Figure description

#### Region 1-2

- Zone B, Sandon
- Zone E, Foster
- Zone H, Broken Bay
- Zone L, Shoalhaven
- Zone M, Wreck Bay
- Zone N, Ulladulla
- Zone P, Sth Brush
- Zone Q, Batemans
- Zone R, Moruya

#### Region 3-4

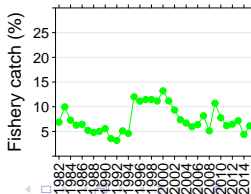
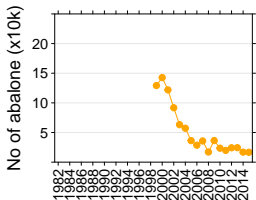
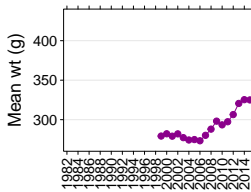
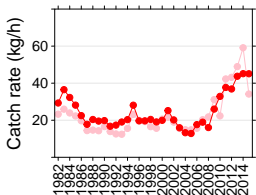
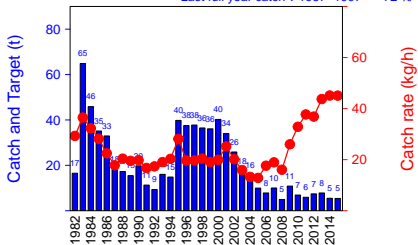
- Zone S, Tuross
- Zone T, Narooma**
- Zone U, Bermagui
- Zone V, Mimosa Rocks
- Zone W, Tathra
- Zone X, Merimbula

#### Region 5-6

- Zone Y1, Eden
- Zone Y2, Mowarra
- Zone Y3, Greencape
- Zone Z, Wonboyn

# Zone U, Bermagui

Last full 3 year catch v 1987-1997 = -67 %  
 Last full year catch v 1987-1997 = -72 %



## Contents

### Figure description

#### Region 1-2

- Zone B, Sandon
- Zone E, Foster
- Zone H, Broken Bay
- Zone L, Shoalhaven
- Zone M, Wreck Bay
- Zone N, Ulladulla
- Zone P, Sth Brush
- Zone Q, Batemans
- Zone R, Moruya

#### Region 3-4

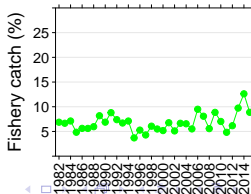
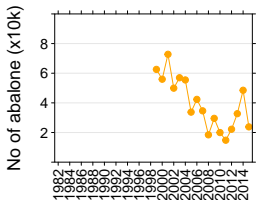
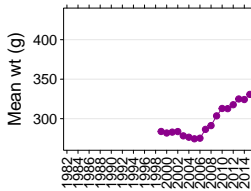
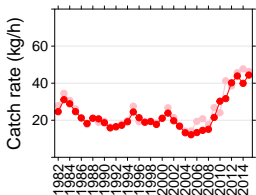
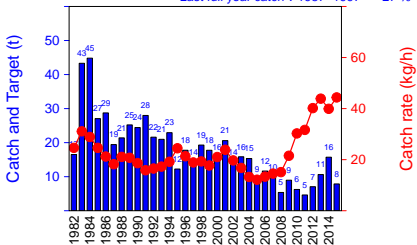
- Zone S, Tuross
- Zone T, Narooma
- Zone U, Bermagui**
- Zone V, Mimosa Rocks
- Zone W, Tathra
- Zone X, Merimbula

#### Region 5-6

- Zone Y1, Eden
- Zone Y2, Mowarra
- Zone Y3, Greencape
- Zone Z, Wonboyn

# Zone V, Mimosa Rocks

Last full 3 year catch v 1987-1997 = -56 %  
 Last full year catch v 1987-1997 = -27 %



## Contents

### Figure description

#### Region 1-2

- Zone B, Sandon
- Zone E, Foster
- Zone H, Broken Bay
- Zone L, Shoalhaven
- Zone M, Wreck Bay
- Zone N, Ulladulla
- Zone P, Sth Brush
- Zone Q, Batemans
- Zone R, Moruya

#### Region 3-4

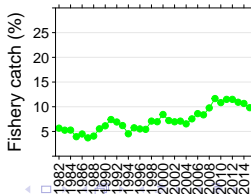
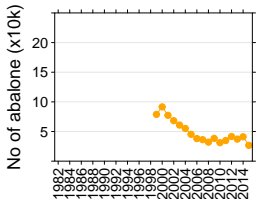
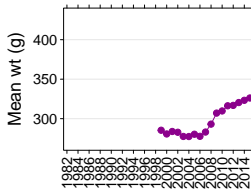
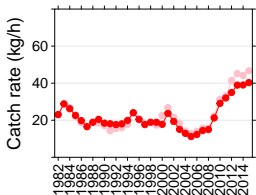
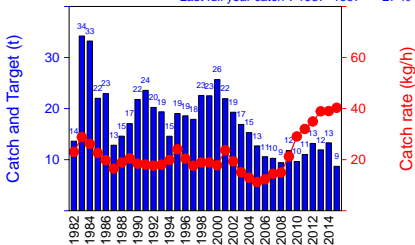
- Zone S, Tuross
- Zone T, Narooma
- Zone U, Bermagui
- Zone V, Mimosa Rocks**
- Zone W, Tathra
- Zone X, Merimbula

#### Region 5-6

- Zone Y1, Eden
- Zone Y2, Mowarra
- Zone Y3, Greencape
- Zone Z, Wonboyn

# Zone W, Tathra

Last full 3 year catch v 1987-1997 = -32 %  
 Last full year catch v 1987-1997 = -27 %



## Contents

### Figure description

#### Region 1-2

- Zone B, Sandon
- Zone E, Foster
- Zone H, Broken Bay
- Zone L, Shoalhaven
- Zone M, Wreck Bay
- Zone N, Ulladulla
- Zone P, Sth Brush
- Zone Q, Batemans
- Zone R, Moruya

#### Region 3-4

- Zone S, Tuross
- Zone T, Narooma
- Zone U, Bermagui
- Zone V, Mimosa Rocks

#### Zone W, Tathra

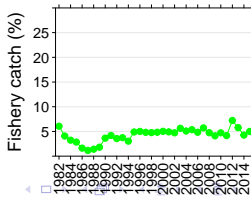
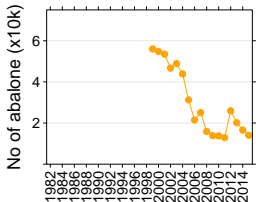
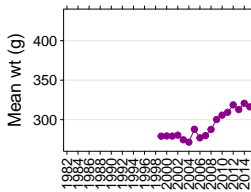
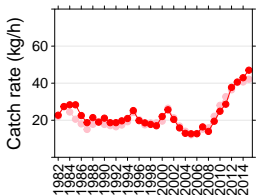
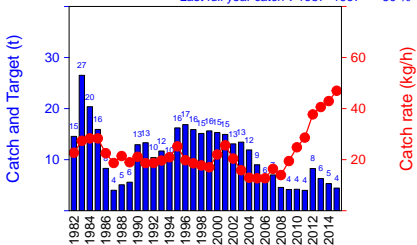
- Zone X, Merimbula

#### Region 5-6

- Zone Y1, Eden
- Zone Y2, Mowarra
- Zone Y3, Greencape
- Zone Z, Wonboyn

# Zone X, Merimbula

Last full 3 year catch v 1987-1997 = -44 %  
 Last full year catch v 1987-1997 = -50 %



## Contents

### Figure description

#### Region 1-2

- Zone B, Sandon
- Zone E, Foster
- Zone H, Broken Bay
- Zone L, Shoalhaven
- Zone M, Wreck Bay
- Zone N, Ulladulla
- Zone P, Sth Brush
- Zone Q, Batemans
- Zone R, Moruya

#### Region 3-4

- Zone S, Tuross
- Zone T, Narooma
- Zone U, Bermagui
- Zone V, Mimosa Rocks
- Zone W, Tathra
- Zone X, Merimbula

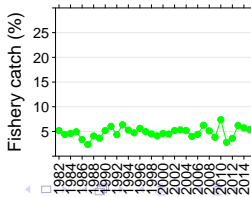
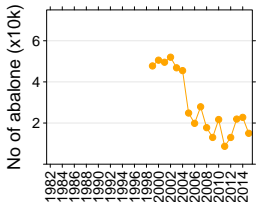
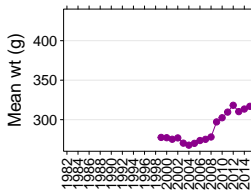
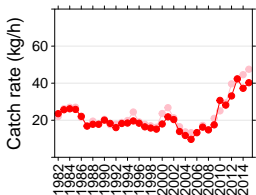
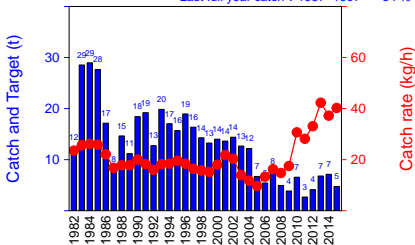
#### Region 5-6

- Zone Y1, Eden
- Zone Y2, Mowarra
- Zone Y3, Greencape
- Zone Z, Wonboyn



# Zone Y1, Eden

Last full 3 year catch v 1987-1997 = -67 %  
 Last full year catch v 1987-1997 = -54 %



## Contents

### Figure description

#### Region 1-2

- Zone B, Sandon
- Zone E, Foster
- Zone H, Broken Bay
- Zone L, Shoalhaven
- Zone M, Wreck Bay
- Zone N, Ulladulla
- Zone P, Sth Brush
- Zone Q, Batemans
- Zone R, Moruya

#### Region 3-4

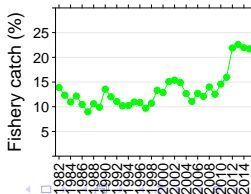
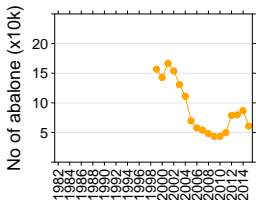
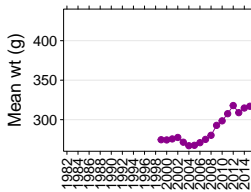
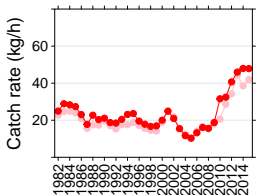
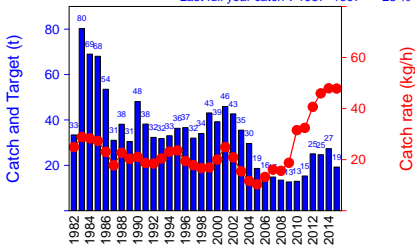
- Zone S, Tuross
- Zone T, Narooma
- Zone U, Bermagui
- Zone V, Mimosa Rocks
- Zone W, Tathra
- Zone X, Merimbula

#### Region 5-6

- Zone Y1, Eden**
- Zone Y2, Mowarra
- Zone Y3, Greencape
- Zone Z, Wonboyn

# Zone Y2, Mowarra

Last full 3 year catch v 1987-1997 = -35 %  
 Last full year catch v 1987-1997 = -23 %



## Contents

### Figure description

#### Region 1-2

- Zone B, Sandon
- Zone E, Foster
- Zone H, Broken Bay
- Zone L, Shoalhaven
- Zone M, Wreck Bay
- Zone N, Ulladulla
- Zone P, Sth Brush
- Zone Q, Batemans
- Zone R, Moruya

#### Region 3-4

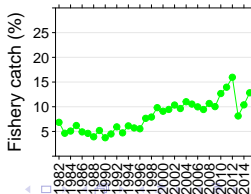
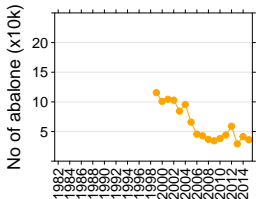
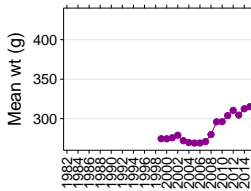
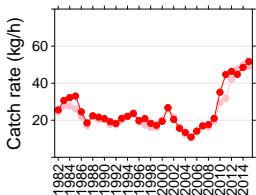
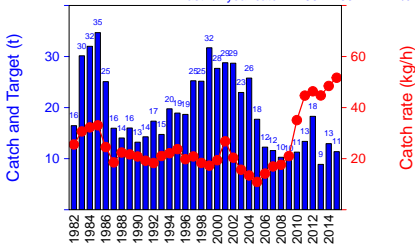
- Zone S, Tuross
- Zone T, Narooma
- Zone U, Bermagui
- Zone V, Mimosa Rocks
- Zone W, Tathra
- Zone X, Merimbula

#### Region 5-6

- Zone Y1, Eden
- Zone Y2, Mowarra**
- Zone Y3, Greencape
- Zone Z, Wonboyn

# Zone Y3, Greencape

Last full 3 year catch v 1987-1997 = -18 %  
 Last full year catch v 1987-1997 = -21 %



## Contents

### Figure description

#### Region 1-2

- Zone B, Sandon
- Zone E, Foster
- Zone H, Broken Bay
- Zone L, Shoalhaven
- Zone M, Wreck Bay
- Zone N, Ulladulla
- Zone P, Sth Brush
- Zone Q, Batemans
- Zone R, Moruya

#### Region 3-4

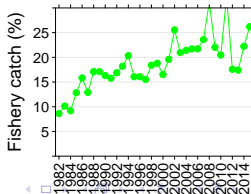
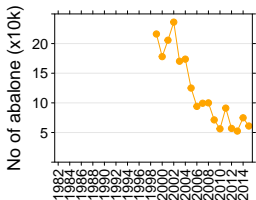
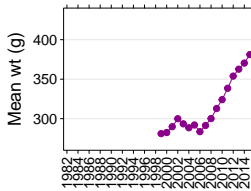
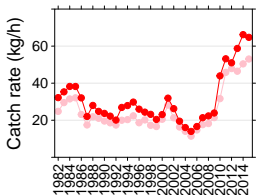
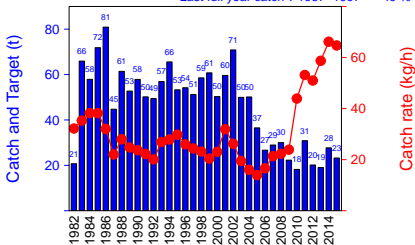
- Zone S, Tuross
- Zone T, Narooma
- Zone U, Bermagui
- Zone V, Mimosa Rocks
- Zone W, Tathra
- Zone X, Merimbula

#### Region 5-6

- Zone Y1, Eden
- Zone Y2, Mowarra
- Zone Y3, Greencape**
- Zone Z, Wonboyn

# Zone Z, Wonboyn

Last full 3 year catch v 1987-1997 = -55 %  
 Last full year catch v 1987-1997 = -49 %



## Contents

### Figure description

#### Region 1-2

- Zone B, Sandon
- Zone E, Foster
- Zone H, Broken Bay
- Zone L, Shoalhaven
- Zone M, Wreck Bay
- Zone N, Ulladulla
- Zone P, Sth Brush
- Zone Q, Batemans
- Zone R, Moruya

#### Region 3-4

- Zone S, Tuross
- Zone T, Narooma
- Zone U, Bermagui
- Zone V, Mimosa Rocks
- Zone W, Tathra
- Zone X, Merimbula

#### Region 5-6

- Zone Y1, Eden
- Zone Y2, Mowarra
- Zone Y3, Greencape
- Zone Z, Wonboyn