

# NSW Abalone Fishery Logbook catch figures

Abalone Council of NSW

12 March, 2019

Monthly Area summary for 26 months  
Note catch data up to end February 2019

Contents

Figure description

SMU 1

- Area 1, Tweed
- Area 2, Port Stephens
- Area 3, Kiama
- Area 4, Ulladulla
- Area 5, South Brush
- Area 6, Batemans

SMU 2

- Area 7, Tuross
- Area 8, Narooma
- Area 9, Bermagui
- Area 10, Bunga
- Area 11, Moon Bay
- Area 12, Turingal
- Area 13, Long Beach

SMU 3

- Area 14, Eden
- Area 15, Saltwater
- Area 16, Bittangabee
- Area 17, Green Cape
- Area 18, City Rock

SMU 4

- Area 19, Wonboyn
- Area 20, Saltlake
- Area 21, Howe

# Contents

## Figure description

### SMU 1

- Area 1, Tweed
- Area 2, Port Stephens
- Area 3, Kiama
- Area 4, Ulladulla
- Area 5, South Brush
- Area 6, Batemans

### SMU 2

- Area 7, Tuross
- Area 8, Narooma
- Area 9, Bermagui
- Area 10, Bunga

- Area 11, Moon Bay
- Area 12, Turingal
- Area 13, Long Beach

### SMU 3

- Area 14, Eden
- Area 15, Saltwater
- Area 16, Bittangabee
- Area 17, Green Cape
- Area 18, City Rock

### SMU 4

- Area 19, Wonboyn
- Area 20, Saltlake
- Area 21, Howe

## Contents

### Figure description

#### SMU 1

- Area 1, Tweed
- Area 2, Port Stephens
- Area 3, Kiama
- Area 4, Ulladulla
- Area 5, South Brush
- Area 6, Batemans

#### SMU 2

- Area 7, Tuross
- Area 8, Narooma
- Area 9, Bermagui
- Area 10, Bunga
- Area 11, Moon Bay
- Area 12, Turingal
- Area 13, Long Beach

#### SMU 3

- Area 14, Eden
- Area 15, Saltwater
- Area 16, Bittangabee
- Area 17, Green Cape
- Area 18, City Rock

#### SMU 4

- Area 19, Wonboyn
- Area 20, Saltlake
- Area 21, Howe

# Figure description

Graph 1. Total catch (blue bars with 6 month centered moving average blue line, 24 month trailing average dark cyan line, and current year target cyan line) and catch rate per bin (box plot with median red circle, quartiles, 1.5IQR and outliers) with loess fit (red line). Standardised catch rates per bin are shown by loess fit to expected values for individual bins for the average diver (green line) and monthly effects (green squares). Values above graph show change of recent 3 or 6 mths to the same period 12 months earlier, with blue indicating total catch/total effort, red for loess fit to raw bin data, and green for loess fit to standardised expected bin values.

Graph 2. Total catch (blue bars with 6 month moving centered average blue line, and 24 month trailing average dark cyan line, and current year target cyan line) and mean weight of abalone per bin (box plot with median pink circle, quartiles, 1.5IQR and outliers) with loess fit (pink line). Standardised weights are shown by loess fit to expected values for individual bins for the average diver in a 60 abalone bin (green line) and monthly effects (green squares). Values above graph show change of recent 3 or 6 mths to the same period 12 months earlier, with blue indicating total catch/total number of abalone, red for loess fit to raw bin data, and green for loess fit to standardised expected bin values.

## Contents

### Figure description

#### SMU 1

- Area 1, Tweed
- Area 2, Port Stephens
- Area 3, Kiama
- Area 4, Ulladulla
- Area 5, South Brush
- Area 6, Batemans

#### SMU 2

- Area 7, Tuross
- Area 8, Narooma
- Area 9, Bermagui
- Area 10, Bunga
- Area 11, Moon Bay
- Area 12, Turingal
- Area 13, Long Beach

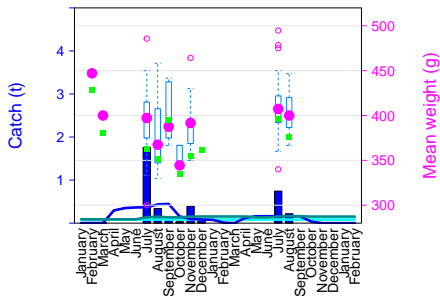
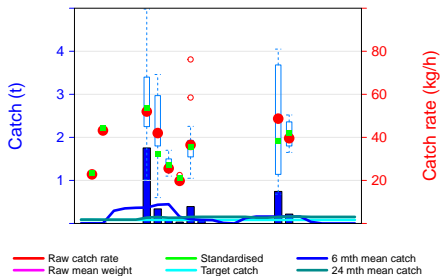
#### SMU 3

- Area 14, Eden
- Area 15, Saltwater
- Area 16, Bittangabee
- Area 17, Green Cape
- Area 18, City Rock

#### SMU 4

- Area 19, Wonboyn
- Area 20, Saltlake
- Area 21, Howe

# Area 1, Tweed, A-E



## Contents

### Figure description

#### SMU 1

- Area 1, Tweed
- Area 2, Port Stephens
- Area 3, Kiama
- Area 4, Ulladulla
- Area 5, South Brush
- Area 6, Batemans

#### SMU 2

- Area 7, Turoos
- Area 8, Narooma
- Area 9, Bermagui
- Area 10, Bunga
- Area 11, Moon Bay
- Area 12, Turingal
- Area 13, Long Beach

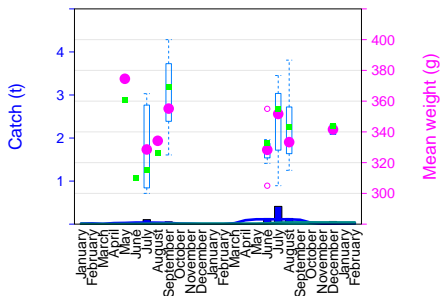
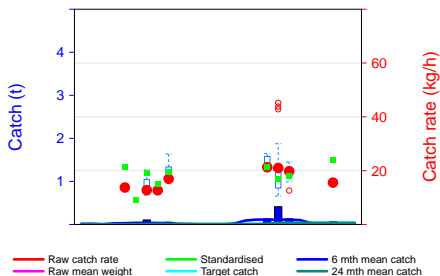
#### SMU 3

- Area 14, Eden
- Area 15, Saltwater
- Area 16, Bittangabee
- Area 17, Green Cape
- Area 18, City Rock

#### SMU 4

- Area 19, Wonboyn
- Area 20, Saltlake
- Area 21, Howe

# Area 2, Port Stephens, F-J



## Contents

### Figure description

#### SMU 1

- Area 1, Tweed
- Area 2, Port Stephens**
- Area 3, Kiama
- Area 4, Ulladulla
- Area 5, South Brush
- Area 6, Batemans

#### SMU 2

- Area 7, Turoos
- Area 8, Narooma
- Area 9, Bermagui
- Area 10, Bunga
- Area 11, Moon Bay
- Area 12, Turingal
- Area 13, Long Beach

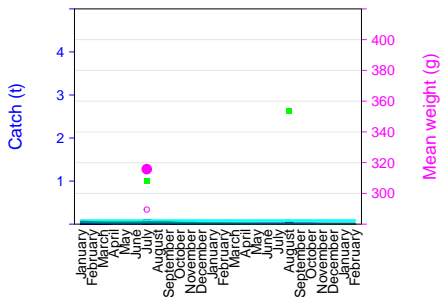
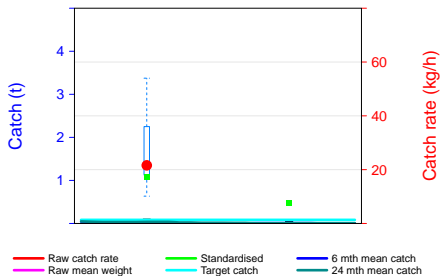
#### SMU 3

- Area 14, Eden
- Area 15, Saltwater
- Area 16, Bittangabee
- Area 17, Green Cape
- Area 18, City Rock

#### SMU 4

- Area 19, Wonboyn
- Area 20, Saltlake
- Area 21, Howe

# Area 3, Kiama, K-M



## Contents

### Figure description

#### SMU 1

- Area 1, Tweed
- Area 2, Port Stephens
- Area 3, Kiama
- Area 4, Ulladulla
- Area 5, South Brush
- Area 6, Batemans

#### SMU 2

- Area 7, Turoos
- Area 8, Narooma
- Area 9, Bermagui
- Area 10, Bunga
- Area 11, Moon Bay
- Area 12, Turingal
- Area 13, Long Beach

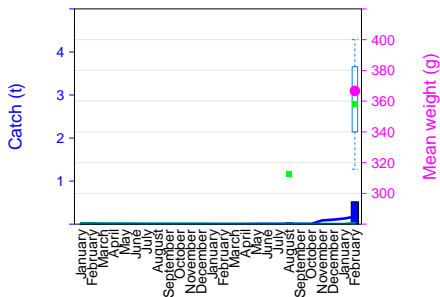
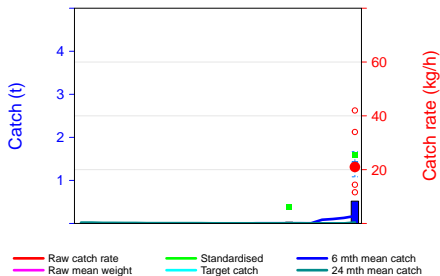
#### SMU 3

- Area 14, Eden
- Area 15, Saltwater
- Area 16, Bittangabee
- Area 17, Green Cape
- Area 18, City Rock

#### SMU 4

- Area 19, Wonboyn
- Area 20, Saltlake
- Area 21, Howe

# Area 4, Ulladulla, N



## Contents

### Figure description

#### SMU 1

- Area 1, Tweed
- Area 2, Port Stephens
- Area 3, Kiama
- Area 4, Ulladulla**
- Area 5, South Brush
- Area 6, Batemans

#### SMU 2

- Area 7, Turoos
- Area 8, Narooma
- Area 9, Bermagui
- Area 10, Bunga
- Area 11, Moon Bay
- Area 12, Turingal
- Area 13, Long Beach

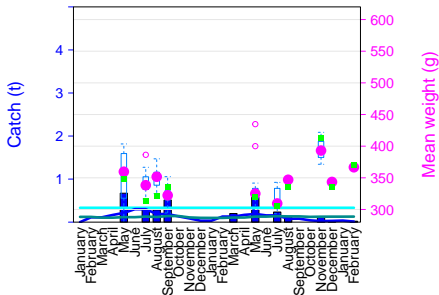
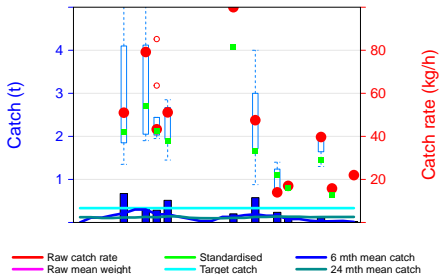
#### SMU 3

- Area 14, Eden
- Area 15, Saltwater
- Area 16, Bittangabee
- Area 17, Green Cape
- Area 18, City Rock

#### SMU 4

- Area 19, Wonboyn
- Area 20, Saltlake
- Area 21, Howe

# Area 5, South Brush, P



## Contents

### Figure description

#### SMU 1

- Area 1, Tweed
- Area 2, Port Stephens
- Area 3, Kiama
- Area 4, Ulladulla
- Area 5, South Brush**
- Area 6, Batemans

#### SMU 2

- Area 7, Tross
- Area 8, Narooma
- Area 9, Bermagui
- Area 10, Bunga
- Area 11, Moon Bay
- Area 12, Turingal
- Area 13, Long Beach

#### SMU 3

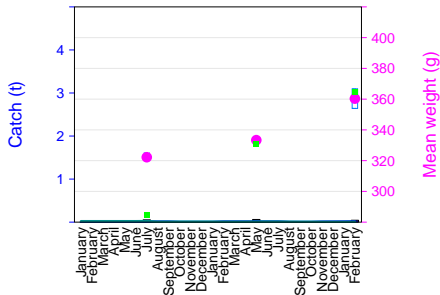
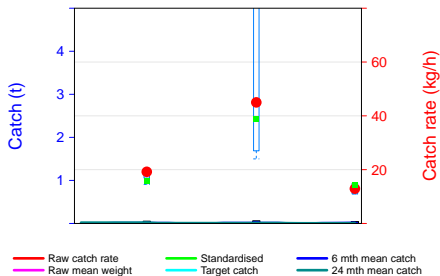
- Area 14, Eden
- Area 15, Saltwater
- Area 16, Bittangabee
- Area 17, Green Cape
- Area 18, City Rock

#### SMU 4

- Area 19, Wonboyn
- Area 20, Saltlake
- Area 21, Howe



# Area 6, Batemans, Q-R



## Contents

### Figure description

#### SMU 1

- Area 1, Tweed
- Area 2, Port Stephens
- Area 3, Kiama
- Area 4, Ulladulla
- Area 5, South Brush
- Area 6, Batemans

#### SMU 2

- Area 7, Turoos
- Area 8, Narooma
- Area 9, Bermagui
- Area 10, Bunga
- Area 11, Moon Bay
- Area 12, Turingal
- Area 13, Long Beach

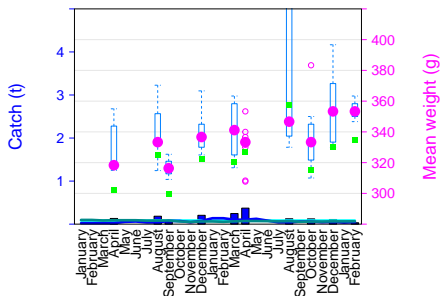
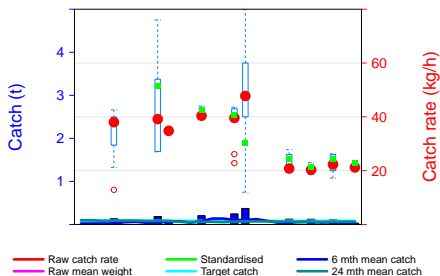
#### SMU 3

- Area 14, Eden
- Area 15, Saltwater
- Area 16, Bittangabee
- Area 17, Green Cape
- Area 18, City Rock

#### SMU 4

- Area 19, Wonboyn
- Area 20, Saltlake
- Area 21, Howe

# Area 7, Tuross, S



## Contents

### Figure description

#### SMU 1

- Area 1, Tweed
- Area 2, Port Stephens
- Area 3, Kiama
- Area 4, Ulladulla
- Area 5, South Brush
- Area 6, Batemans

#### SMU 2

- Area 7, Tuross
- Area 8, Narooma
- Area 9, Bermagui
- Area 10, Bunga
- Area 11, Moon Bay
- Area 12, Turingal
- Area 13, Long Beach

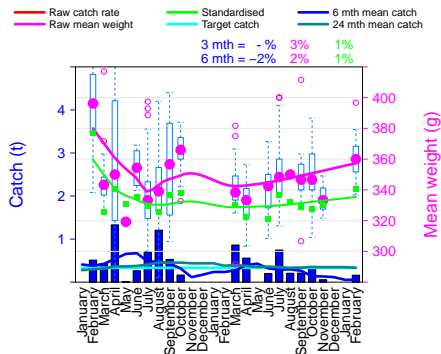
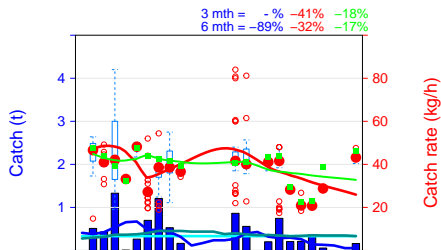
#### SMU 3

- Area 14, Eden
- Area 15, Saltwater
- Area 16, Bittangabee
- Area 17, Green Cape
- Area 18, City Rock

#### SMU 4

- Area 19, Wonboyn
- Area 20, Saltlake
- Area 21, Howe

# Area 8, Narooma, T



## Contents

### Figure description

#### SMU 1

- Area 1, Tweed
- Area 2, Port Stephens
- Area 3, Kiama
- Area 4, Ulladulla
- Area 5, South Brush
- Area 6, Batemans

#### SMU 2

- Area 7, Turoos
- Area 8, Narooma**
- Area 9, Bermagui
- Area 10, Bunga
- Area 11, Moon Bay
- Area 12, Turingal
- Area 13, Long Beach

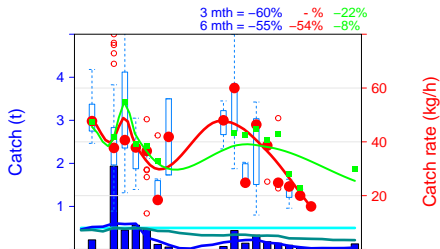
#### SMU 3

- Area 14, Eden
- Area 15, Saltwater
- Area 16, Bittangabee
- Area 17, Green Cape
- Area 18, City Rock

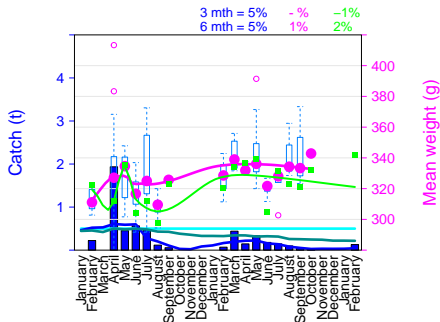
#### SMU 4

- Area 19, Wonboyn
- Area 20, Saltlake
- Area 21, Howe

# Area 9, Bermagui, U1-3



— Raw catch rate      — Standardised      — 6 mth mean catch  
— Raw mean weight      — Target catch      — 24 mth mean catch



## Contents

### Figure description

#### SMU 1

- Area 1, Tweed
- Area 2, Port Stephens
- Area 3, Kiama
- Area 4, Ulladulla
- Area 5, South Brush
- Area 6, Batemans

#### SMU 2

- Area 7, Tross
- Area 8, Narooma
- Area 9, Bermagui**
- Area 10, Bunga
- Area 11, Moon Bay
- Area 12, Turingal
- Area 13, Long Beach

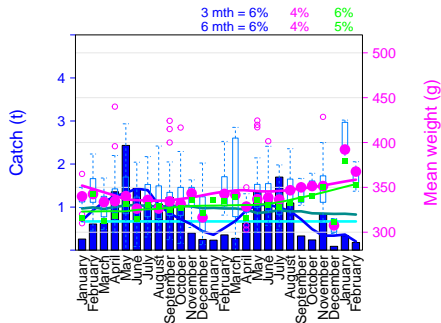
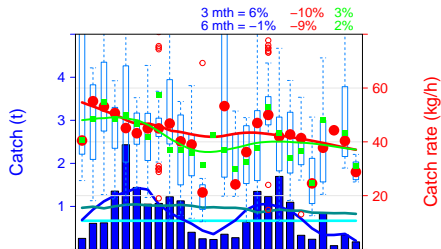
#### SMU 3

- Area 14, Eden
- Area 15, Saltwater
- Area 16, Bittangabee
- Area 17, Green Cape
- Area 18, City Rock

#### SMU 4

- Area 19, Wonboyn
- Area 20, Saltlake
- Area 21, Howe

# Area 10, Bunga, U4-V2



## Contents

### Figure description

#### SMU 1

- Area 1, Tweed
- Area 2, Port Stephens
- Area 3, Kiama
- Area 4, Ulladulla
- Area 5, South Brush
- Area 6, Batemans

#### SMU 2

- Area 7, Tuross
- Area 8, Narooma
- Area 9, Bermagui
- Area 10, Bunga**
- Area 11, Moon Bay
- Area 12, Turingal
- Area 13, Long Beach

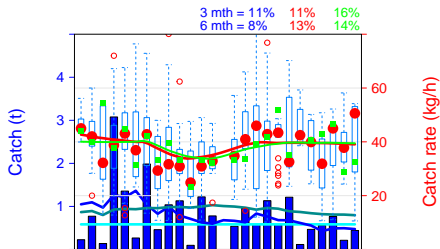
#### SMU 3

- Area 14, Eden
- Area 15, Saltwater
- Area 16, Bittangabee
- Area 17, Green Cape
- Area 18, City Rock

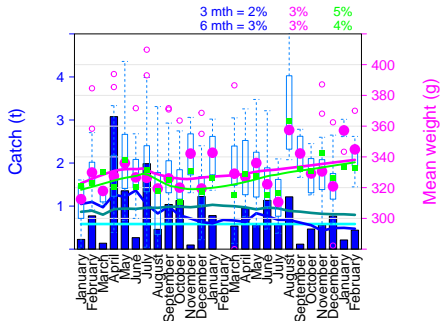
#### SMU 4

- Area 19, Wonboyn
- Area 20, Saltlake
- Area 21, Howe

# Area 11, Moon Bay, V3-W1



— Raw catch rate      — Standardised      — 6 mth mean catch  
— Raw mean weight    — Target catch      — 24 mth mean catch



## Contents

### Figure description

#### SMU 1

- Area 1, Tweed
- Area 2, Port Stephens
- Area 3, Kiama
- Area 4, Ulladulla
- Area 5, South Brush
- Area 6, Batemans

#### SMU 2

- Area 7, Tross
- Area 8, Narooma
- Area 9, Bermagui
- Area 10, Bunga
- Area 11, Moon Bay**
- Area 12, Turingal
- Area 13, Long Beach

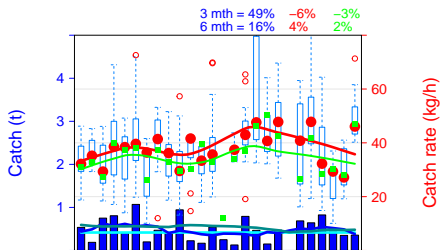
#### SMU 3

- Area 14, Eden
- Area 15, Saltwater
- Area 16, Bittangabee
- Area 17, Green Cape
- Area 18, City Rock

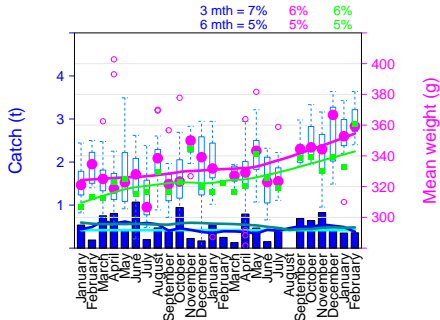
#### SMU 4

- Area 19, Wonboyn
- Area 20, Saltlake
- Area 21, Howe

# Area 12, Turingal, W2-X1



— Raw catch rate      — Standardised      — 6 mth mean catch  
— Raw mean weight      — Target catch      — 24 mth mean catch



## Contents

### Figure description

#### SMU 1

- Area 1, Tweed
- Area 2, Port Stephens
- Area 3, Kiama
- Area 4, Ulladulla
- Area 5, South Brush
- Area 6, Batemans

#### SMU 2

- Area 7, Turoos
- Area 8, Narooma
- Area 9, Bermagui
- Area 10, Bunga
- Area 11, Moon Bay

#### Area 12, Turingal

- Area 13, Long Beach

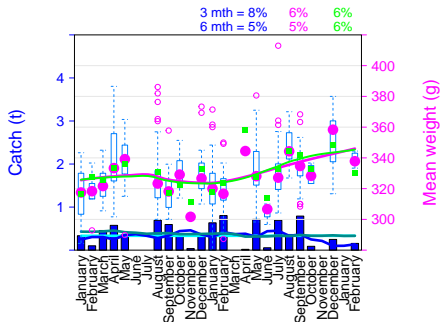
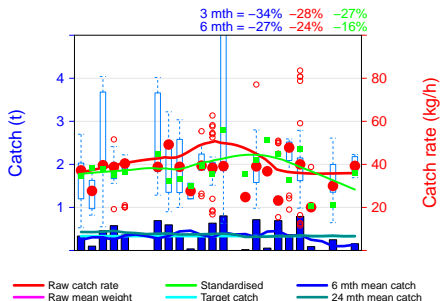
#### SMU 3

- Area 14, Eden
- Area 15, Saltwater
- Area 16, Bittangabee
- Area 17, Green Cape
- Area 18, City Rock

#### SMU 4

- Area 19, Wonboyn
- Area 20, Saltlake
- Area 21, Howe

# Area 13, Long Beach, X2



## Contents

### Figure description

#### SMU 1

- Area 1, Tweed
- Area 2, Port Stephens
- Area 3, Kiama
- Area 4, Ulladulla
- Area 5, South Brush
- Area 6, Batemans

#### SMU 2

- Area 7, Tross
- Area 8, Narooma
- Area 9, Bermagui
- Area 10, Bunga
- Area 11, Moon Bay
- Area 12, Turingal
- Area 13, Long Beach

#### SMU 3

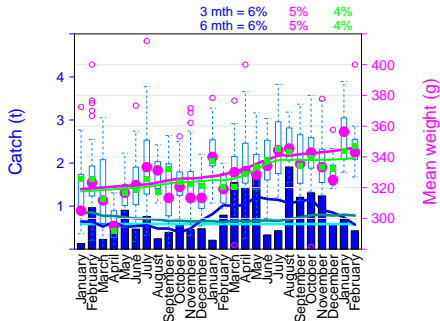
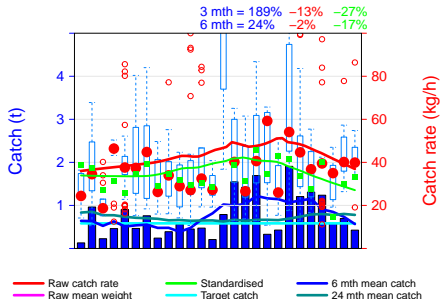
- Area 14, Eden
- Area 15, Saltwater
- Area 16, Bittangabee
- Area 17, Green Cape
- Area 18, City Rock

#### SMU 4

- Area 19, Wonboyn
- Area 20, Saltlake
- Area 21, Howe



# Area 14, Eden, Y11-21



## Contents

### Figure description

#### SMU 1

- Area 1, Tweed
- Area 2, Port Stephens
- Area 3, Kiama
- Area 4, Ulladulla
- Area 5, South Brush
- Area 6, Batemans

#### SMU 2

- Area 7, Tross
- Area 8, Narooma
- Area 9, Bermagui
- Area 10, Bunga
- Area 11, Moon Bay
- Area 12, Turingal
- Area 13, Long Beach

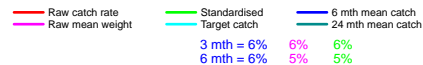
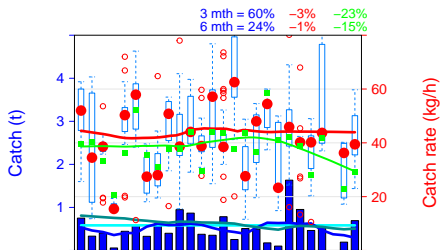
#### SMU 3

- Area 14, Eden**
- Area 15, Saltwater
- Area 16, Bittangabee
- Area 17, Green Cape
- Area 18, City Rock

#### SMU 4

- Area 19, Wonboyn
- Area 20, Saltlake
- Area 21, Howe

# Area 15, Saltwater, Y22-23



## Contents

### Figure description

#### SMU 1

- Area 1, Tweed
- Area 2, Port Stephens
- Area 3, Kiama
- Area 4, Ulladulla
- Area 5, South Brush
- Area 6, Batemans

#### SMU 2

- Area 7, Tross
- Area 8, Narooma
- Area 9, Bermagui
- Area 10, Bunga
- Area 11, Moon Bay
- Area 12, Turingal
- Area 13, Long Beach

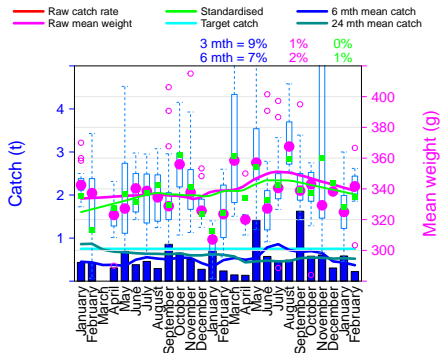
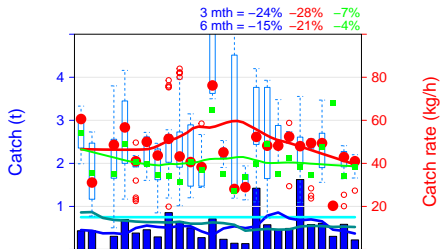
#### SMU 3

- Area 14, Eden
- Area 15, Saltwater**
- Area 16, Bittangabee
- Area 17, Green Cape
- Area 18, City Rock

#### SMU 4

- Area 19, Wonboyn
- Area 20, Saltlake
- Area 21, Howe

# Area 16, Bittangabee, Y24



## Contents

### Figure description

#### SMU 1

- Area 1, Tweed
- Area 2, Port Stephens
- Area 3, Kiama
- Area 4, Ulladulla
- Area 5, South Brush
- Area 6, Batemans

#### SMU 2

- Area 7, Tuross
- Area 8, Narooma
- Area 9, Bermagui
- Area 10, Bungu
- Area 11, Moon Bay
- Area 12, Turingal
- Area 13, Long Beach

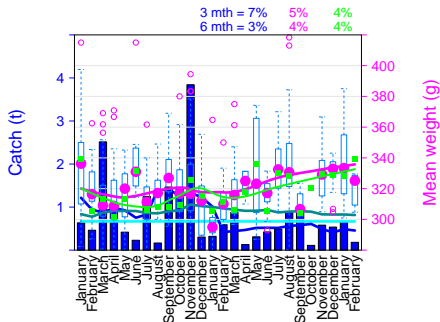
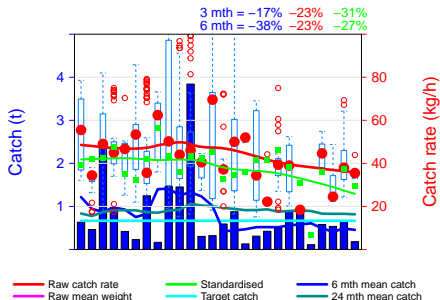
#### SMU 3

- Area 14, Eden
- Area 15, Saltwater
- Area 16, Bittangabee**
- Area 17, Green Cape
- Area 18, City Rock

#### SMU 4

- Area 19, Wonboyn
- Area 20, Saltlake
- Area 21, Howe

# Area 17, Green Cape, Y31



## Contents

### Figure description

#### SMU 1

- Area 1, Tweed
- Area 2, Port Stephens
- Area 3, Kiama
- Area 4, Ulladulla
- Area 5, South Brush
- Area 6, Batemans

#### SMU 2

- Area 7, Tuross
- Area 8, Narooma
- Area 9, Bermagui
- Area 10, Bungu
- Area 11, Moon Bay
- Area 12, Turingal
- Area 13, Long Beach

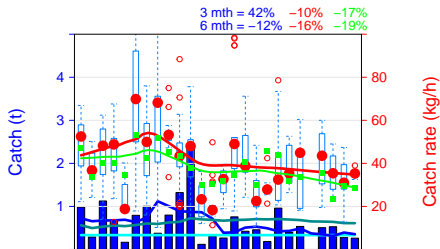
#### SMU 3

- Area 14, Eden
- Area 15, Saltwater
- Area 16, Bittangabee
- Area 17, Green Cape**
- Area 18, City Rock

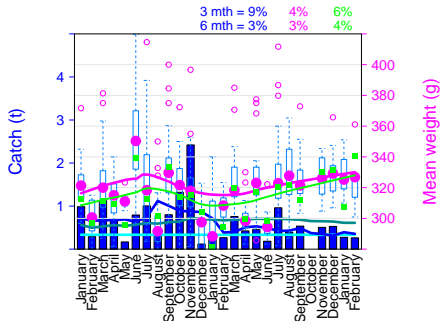
#### SMU 4

- Area 19, Wonboyn
- Area 20, Saltlake
- Area 21, Howe

# Area 18, City Rock, Y32



— Raw catch rate      — Standardised  
— Raw mean weight      — Target catch      — 6 mth mean catch  
— 24 mth mean catch



## Contents

### Figure description

#### SMU 1

- Area 1, Tweed
- Area 2, Port Stephens
- Area 3, Kiama
- Area 4, Ulladulla
- Area 5, South Brush
- Area 6, Batemans

#### SMU 2

- Area 7, Tuross
- Area 8, Narooma
- Area 9, Bermagui
- Area 10, Bunga
- Area 11, Moon Bay
- Area 12, Turingal
- Area 13, Long Beach

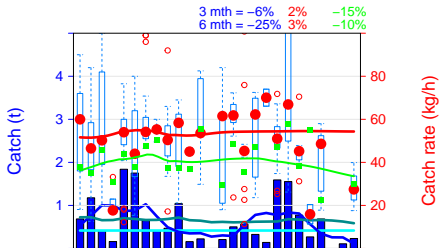
#### SMU 3

- Area 14, Eden
- Area 15, Saltwater
- Area 16, Bittangabee
- Area 17, Green Cape
- Area 18, City Rock

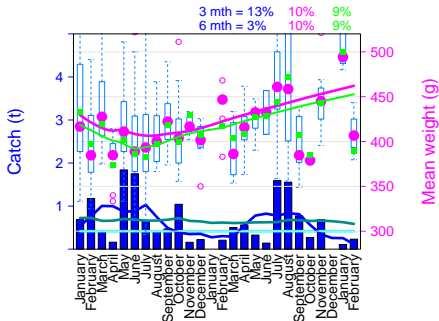
#### SMU 4

- Area 19, Wonboyn
- Area 20, Saltlake
- Area 21, Howe

# Area 19, Wonboyn, Z1-3



— Raw catch rate      — Standardised      — 6 mth mean catch  
— Raw mean weight      — Target catch      — 24 mth mean catch



## Contents

### Figure description

#### SMU 1

- Area 1, Tweed
- Area 2, Port Stephens
- Area 3, Kiama
- Area 4, Ulladulla
- Area 5, South Brush
- Area 6, Batemans

#### SMU 2

- Area 7, Tross
- Area 8, Narooma
- Area 9, Bermagui
- Area 10, Bunga
- Area 11, Moon Bay
- Area 12, Turingal
- Area 13, Long Beach

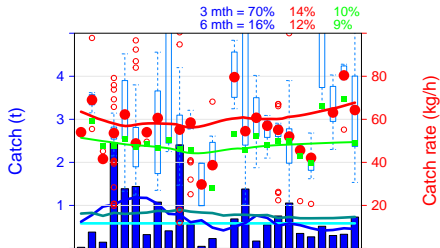
#### SMU 3

- Area 14, Eden
- Area 15, Saltwater
- Area 16, Bittangabee
- Area 17, Green Cape
- Area 18, City Rock

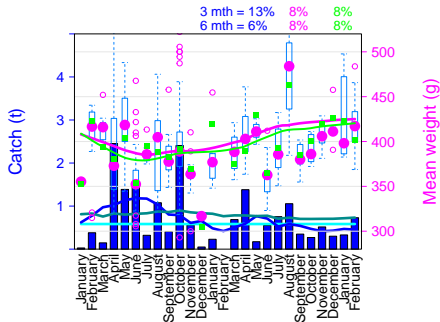
#### SMU 4

- Area 19, Wonboyn**
- Area 20, Saltlake
- Area 21, Howe

# Area 20, Saltlake, Z4



Raw catch rate      Standardised      6 mth mean catch  
Raw mean weight      Target catch      24 mth mean catch



## Contents

### Figure description

#### SMU 1

- Area 1, Tweed
- Area 2, Port Stephens
- Area 3, Kiama
- Area 4, Ulladulla
- Area 5, South Brush
- Area 6, Batemans

#### SMU 2

- Area 7, Tuross
- Area 8, Narooma
- Area 9, Bermagui
- Area 10, Bunga
- Area 11, Moon Bay
- Area 12, Turingal
- Area 13, Long Beach

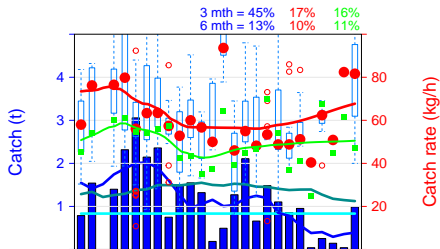
#### SMU 3

- Area 14, Eden
- Area 15, Saltwater
- Area 16, Bittangabee
- Area 17, Green Cape
- Area 18, City Rock

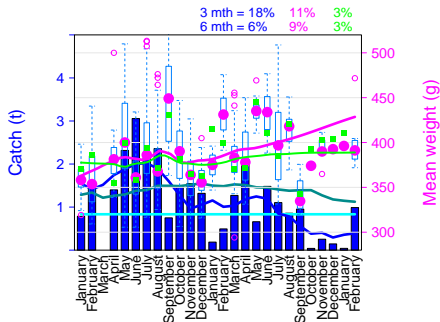
#### SMU 4

- Area 19, Wonboyn
- Area 20, Saltlake
- Area 21, Howe

# Area 21, Howe, Z5



— Raw catch rate      — Standardised      — 6 mth mean catch  
— Raw mean weight      — Target catch      — 24 mth mean catch



## Contents

### Figure description

#### SMU 1

- Area 1, Tweed
- Area 2, Port Stephens
- Area 3, Kiama
- Area 4, Ulladulla
- Area 5, South Brush
- Area 6, Batemans

#### SMU 2

- Area 7, Tuross
- Area 8, Narooma
- Area 9, Bermagui
- Area 10, Bunga
- Area 11, Moon Bay
- Area 12, Turingal
- Area 13, Long Beach

#### SMU 3

- Area 14, Eden
- Area 15, Saltwater
- Area 16, Bittangabee
- Area 17, Green Cape
- Area 18, City Rock

#### SMU 4

- Area 19, Wonboyn
- Area 20, Saltlake
- Area 21, Howe